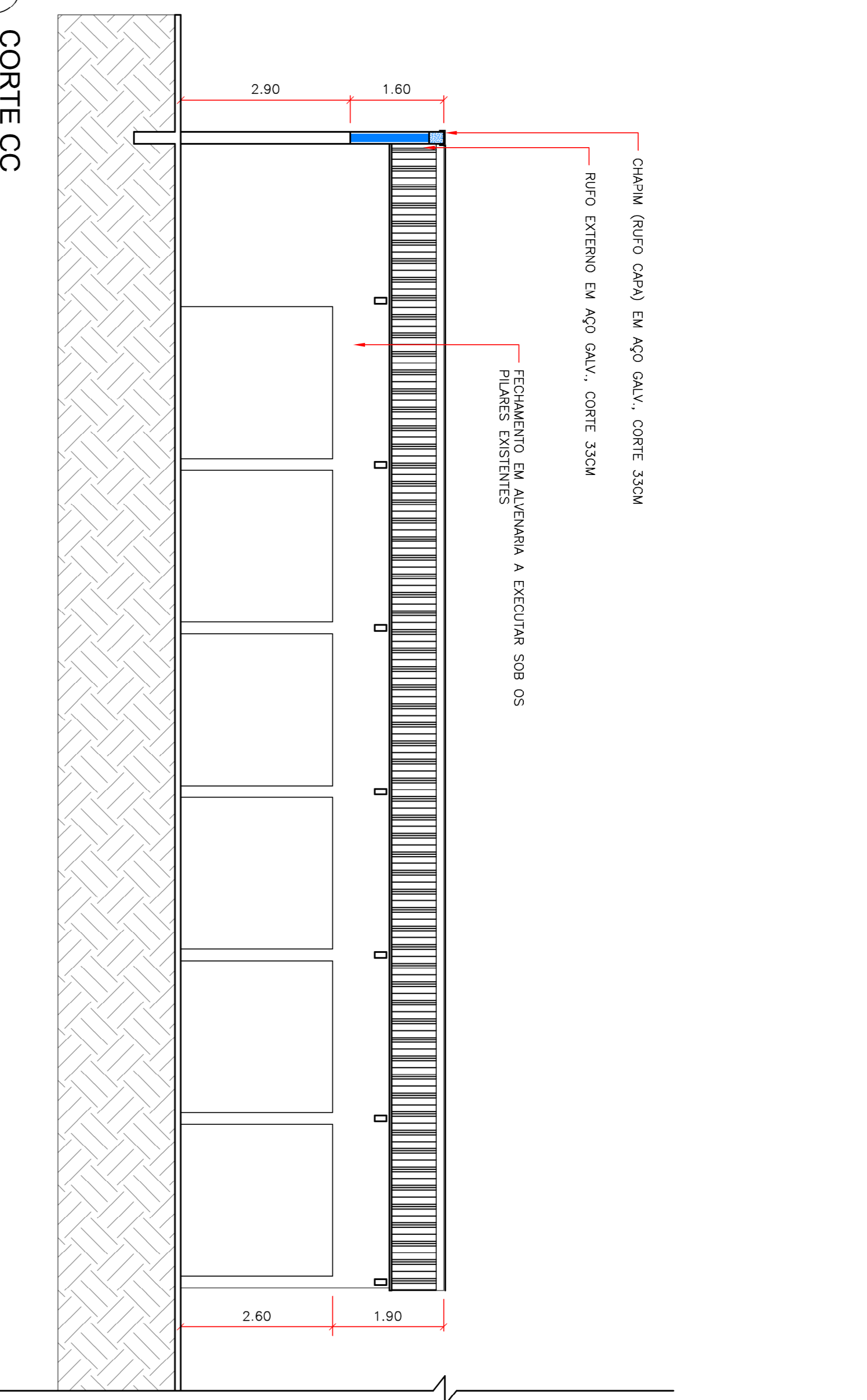
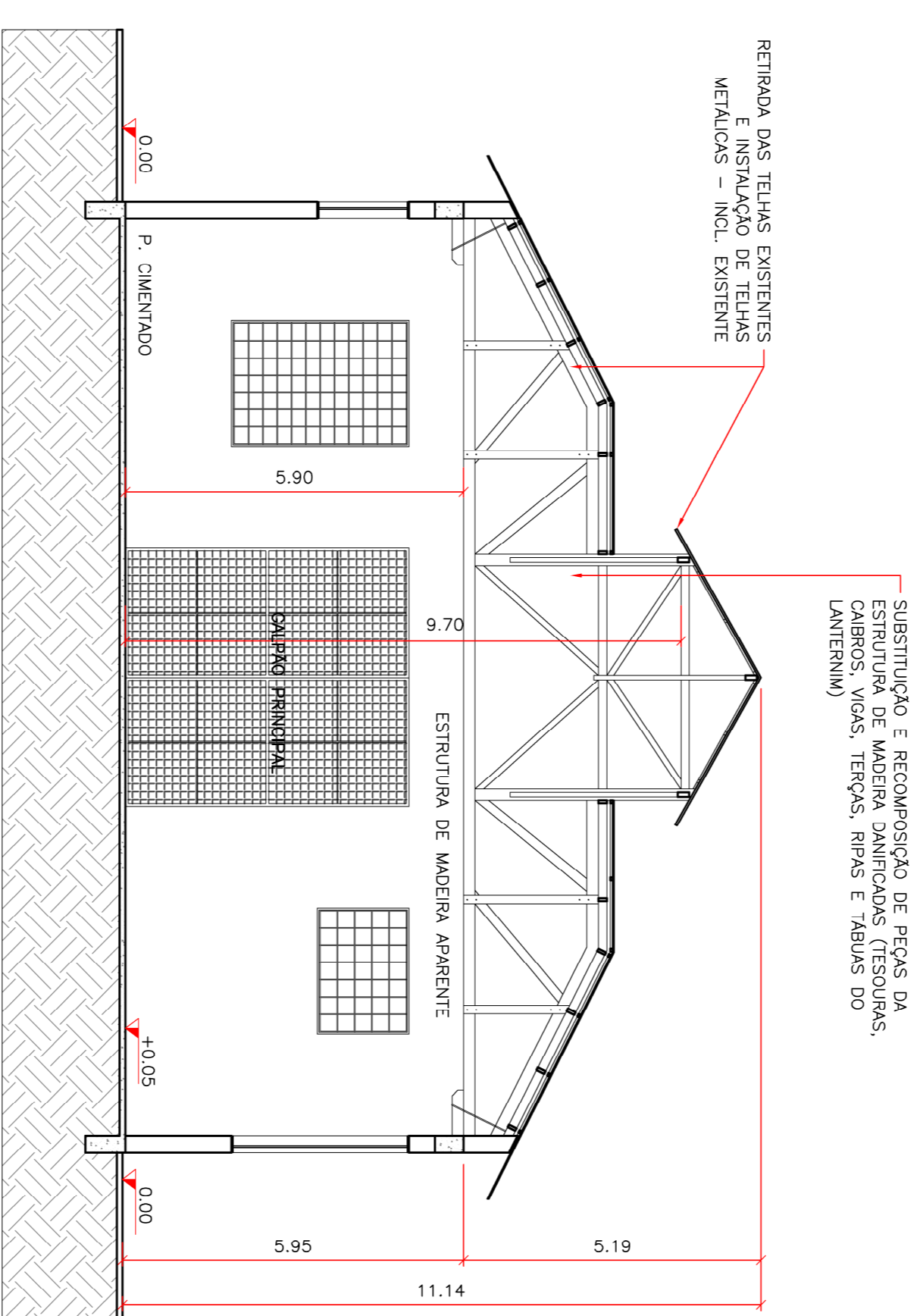


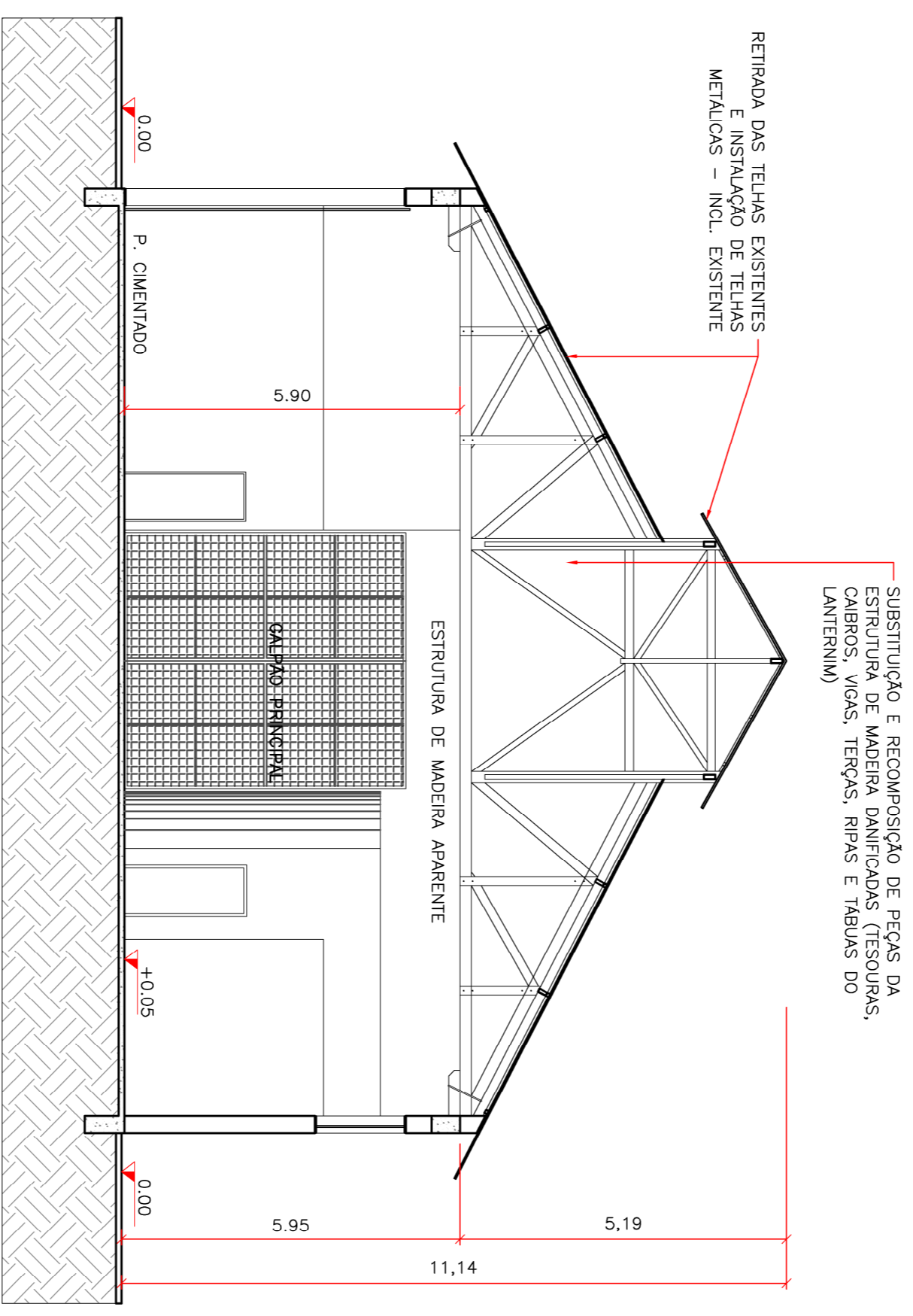
4 CORTE BB
ESCALA 1/75



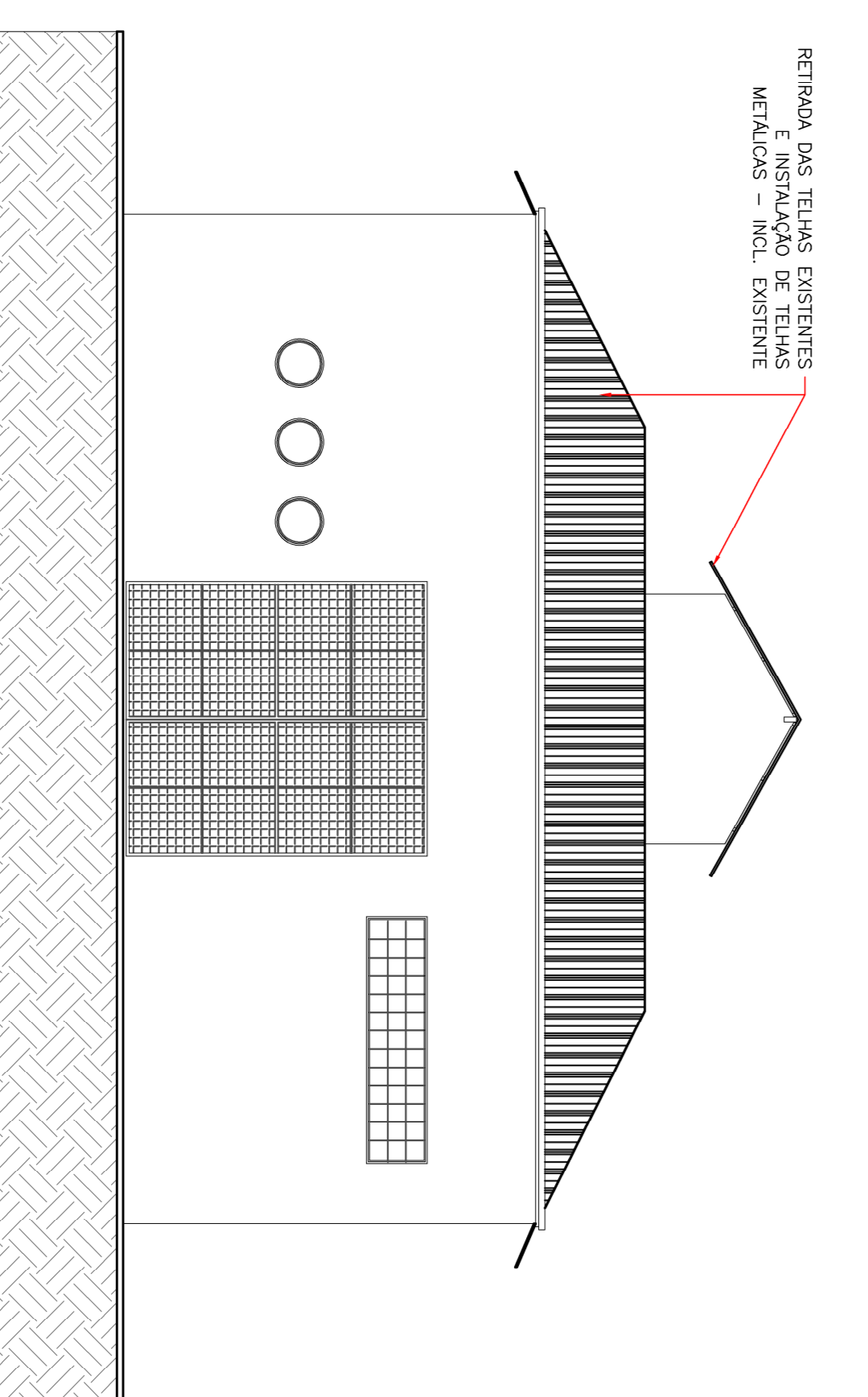
5 CORTE CC
ESCALA 1/75



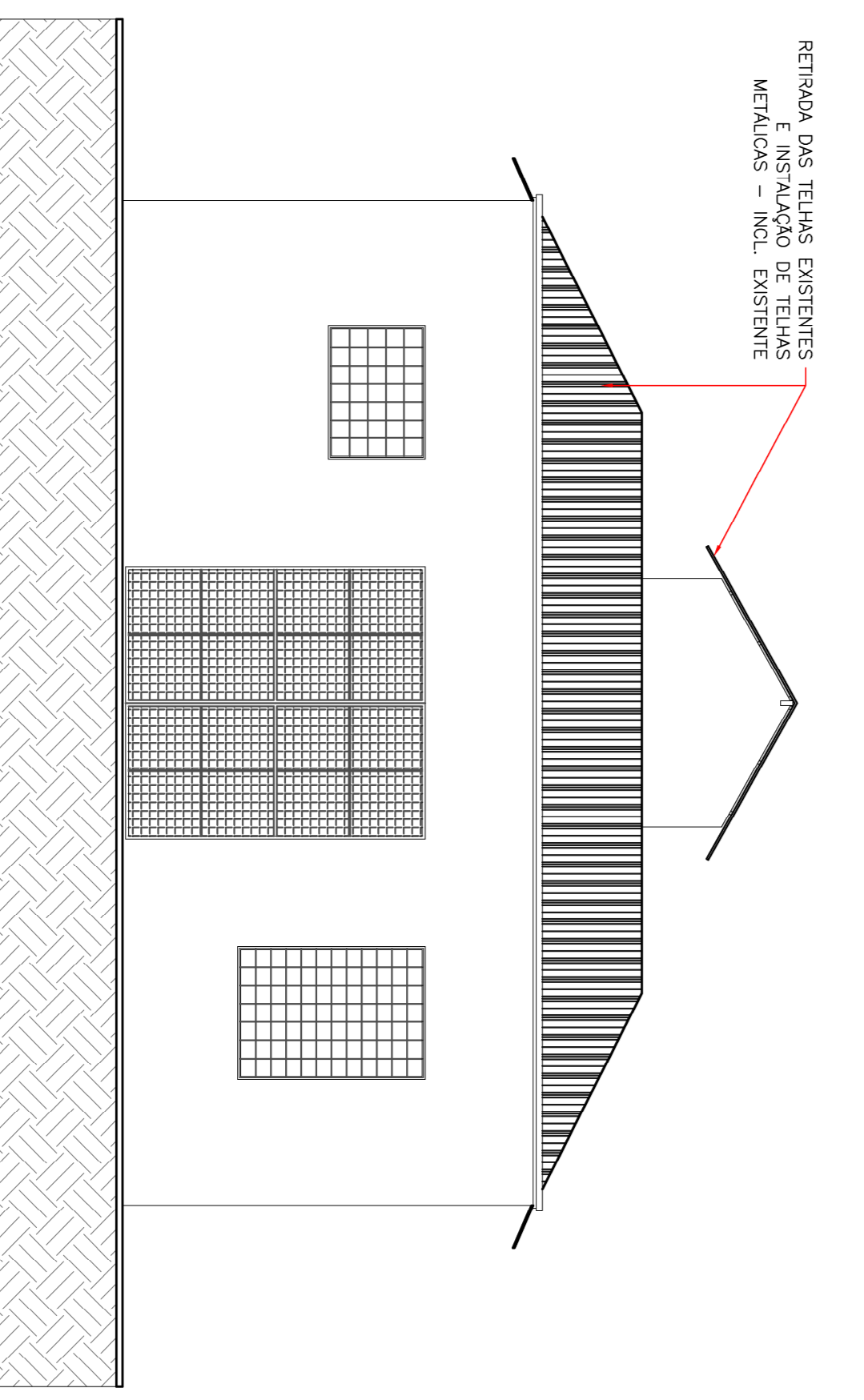
6 CORTE DD
ESCALA 1:100



7 CORTE EE
ESCALA 1:100



8 ELEVACÃO FRONTAL
ESCALA 1:100



9 ELEVACÃO POSTERIOR
ESCALA 1:100

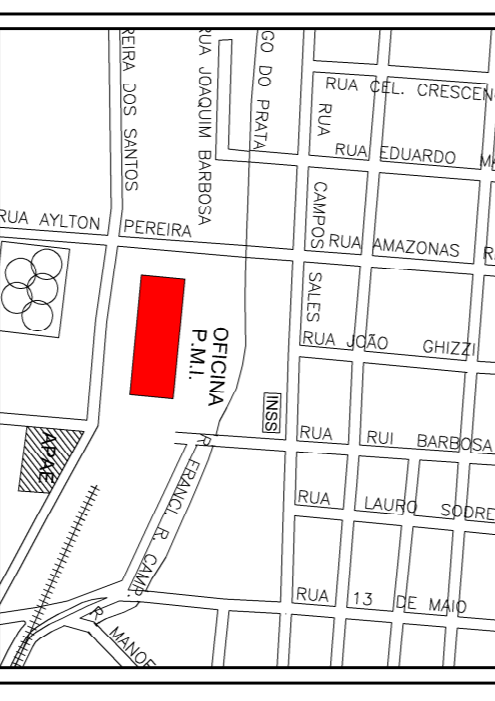
PROJETO DE REFORMA

PREFEITURA MUNICIPAL DE ITARARÉ
SEDEM - SECRETARIA DE DESENVOLVIMENTO MUNICIPAL

REFORMA DE TELHA DO GALPÃO DA OFICINA MUNICIPAL

RUA RUI BARBOSA, 514º CENTRO - ITARARÉ/SP

LOCALIZAÇÃO



QUADRO DE ÁREAS
1634,08 m²

ÁREA DE COBERTURA A REFORMAR:

ESPAÇO RESERVADO PARA APROVAÇÃO

PREFEITO MUNICIPAL
HELTON SCHIOT DO VALE
GESTÃO 2021/2024

RESP. TÉCNICO
MIRELLA DE CAMARGO TILUS
ARQUITETA URBANISTA
CAU 4252452-6

PROJECIONISTA
02/02

DES. CADAS
DERMILAN

DATA
NOV/2021