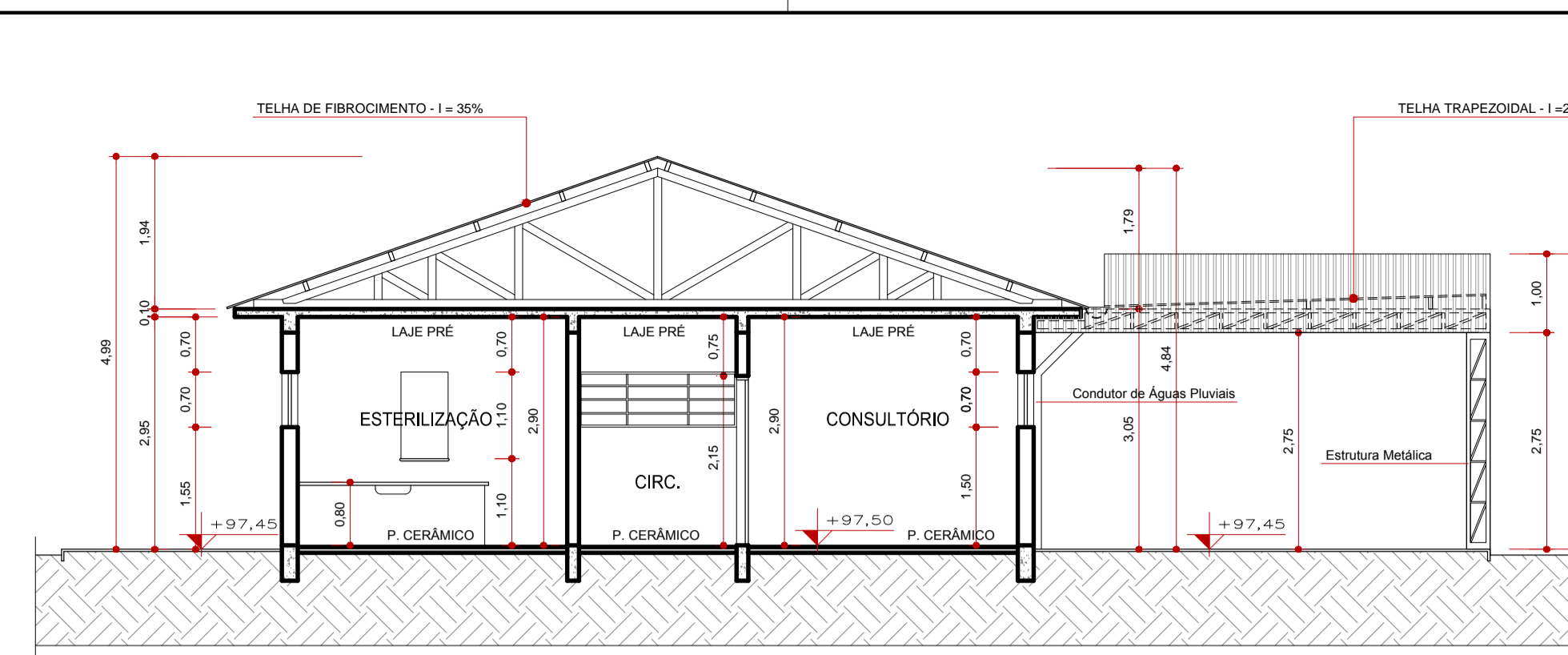
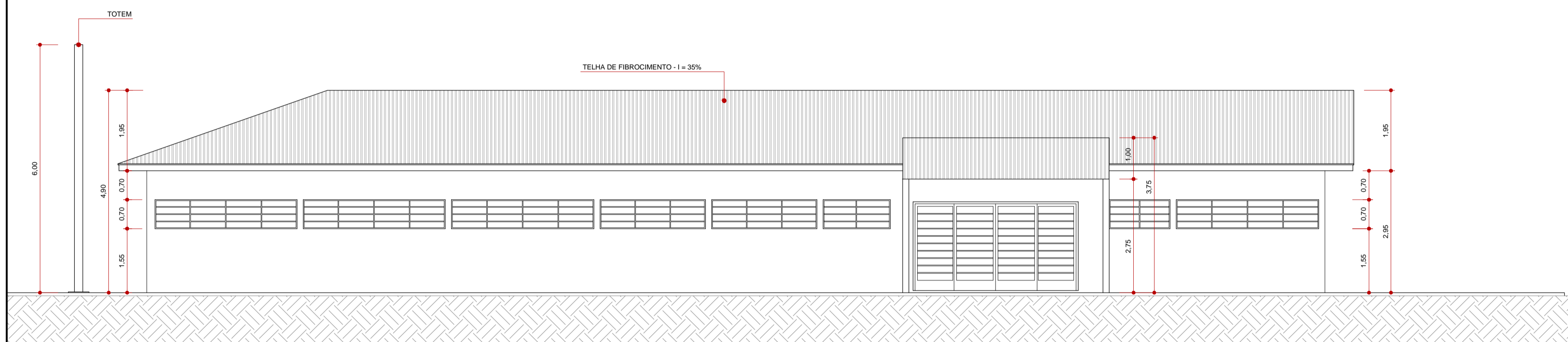


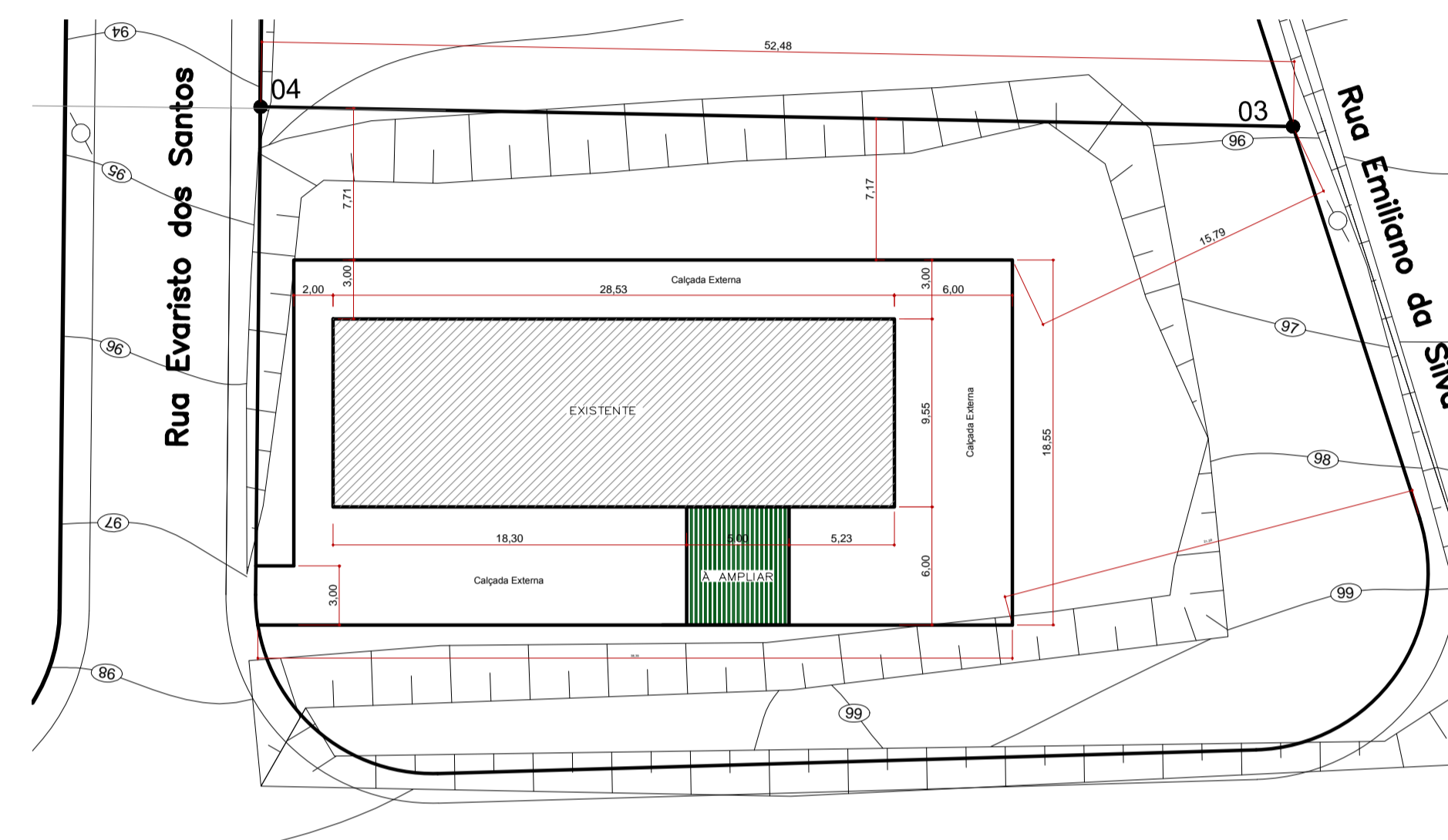
CORTE A-A
ESC 1:75



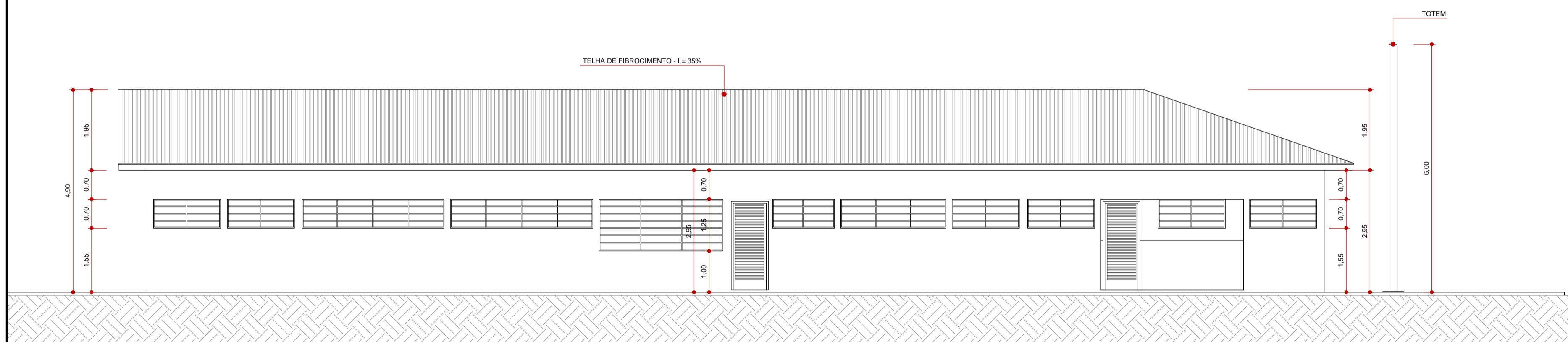
CORTE B-B
ESC 1:75



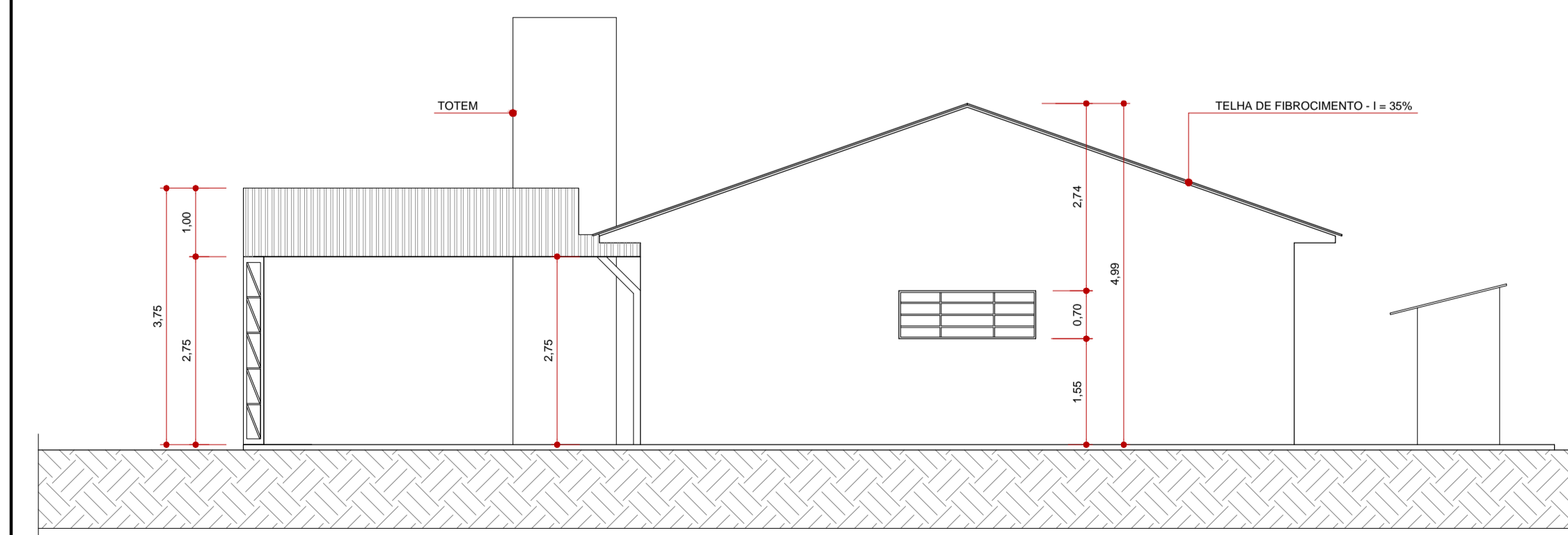
ELEVAÇÃO E1
ESC 1:75



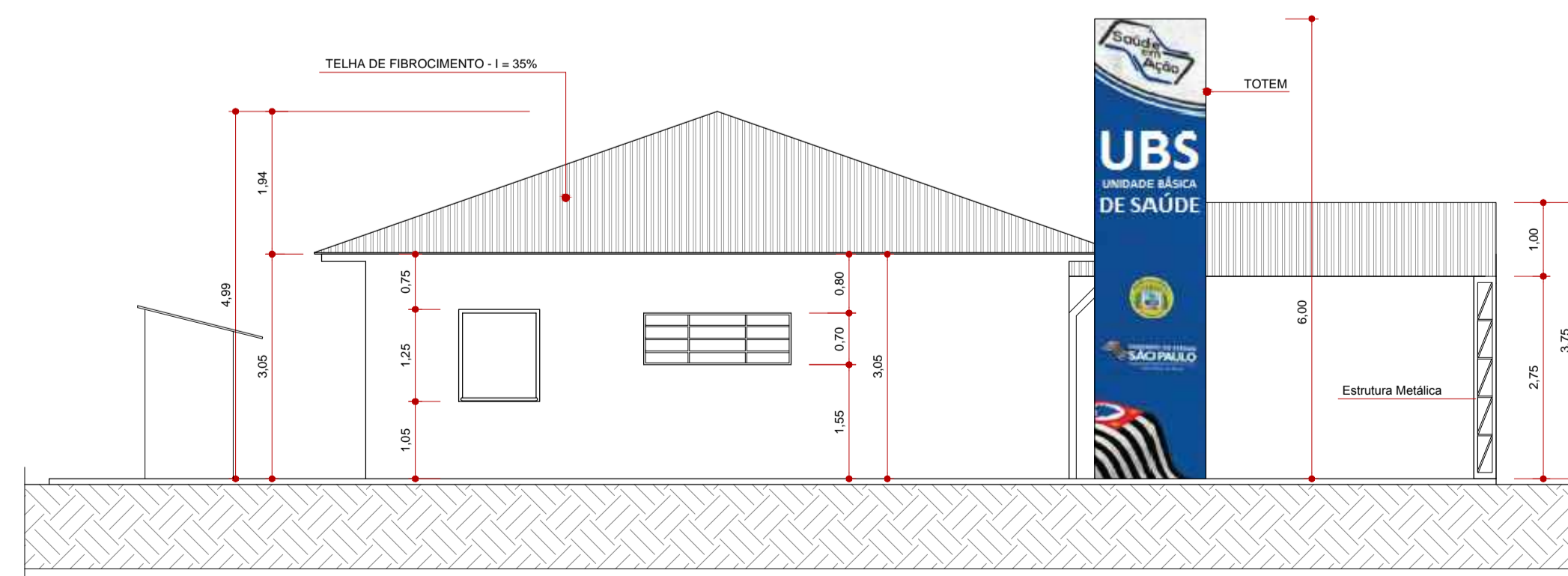
IMPLANTAÇÃO
SEM ESCALA




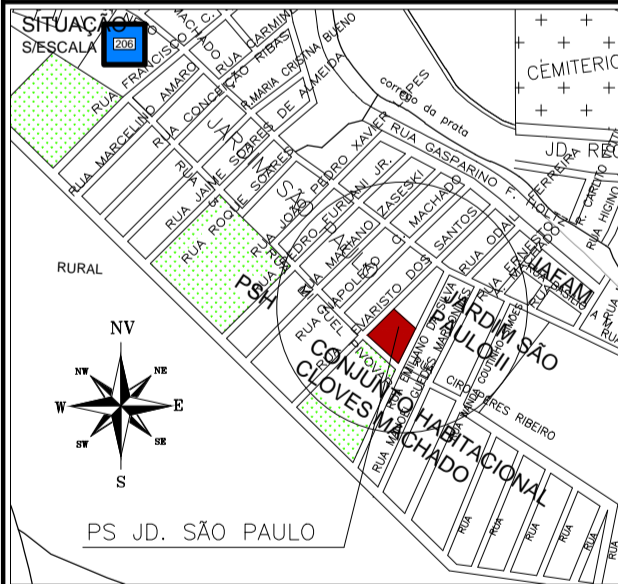
ELEVAÇÃO E2
ESC 1:75



ELEVAÇÃO E3
ESC 1:75



ELEVAÇÃO E4
ESC 1:75

PROJETO ARQUITETÔNICO		PRONCHA
PREFEITURA MUNICIPAL DE ITARARÉ SECRETARIA DE DESENVOLVIMENTO MUNICIPAL		02/02
		DIS/ CAD DERIMAR
		DATA JAN / 2017
OBRA REFORMA POSTO DE SAÚDE JARDIM SÃO PAULO		
ENDEREÇO Rua Evaristo dos Santos nº, - Jardim São Paulo - Itararé - SP		
		PREFEITO MUNICIPAL HELITON SCHEIDT DO VALLE Gestão 2017 / 2020
QUADRO DE ÁREAS		RESP. TÉCNICO JOÃO BATISTA ALVES DOS SANTOS Engenheiro Civil CREA 5061202902 SP
Ver Prancha 01		
ESPAÇO RESERVADO PARA APROVAÇÃO		